

NDB or GPS-A

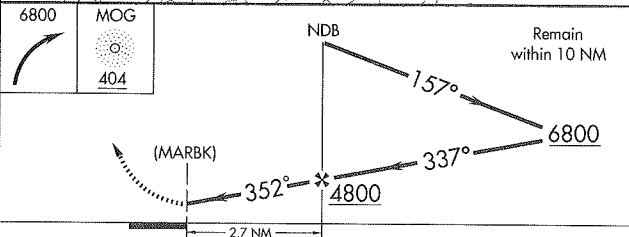
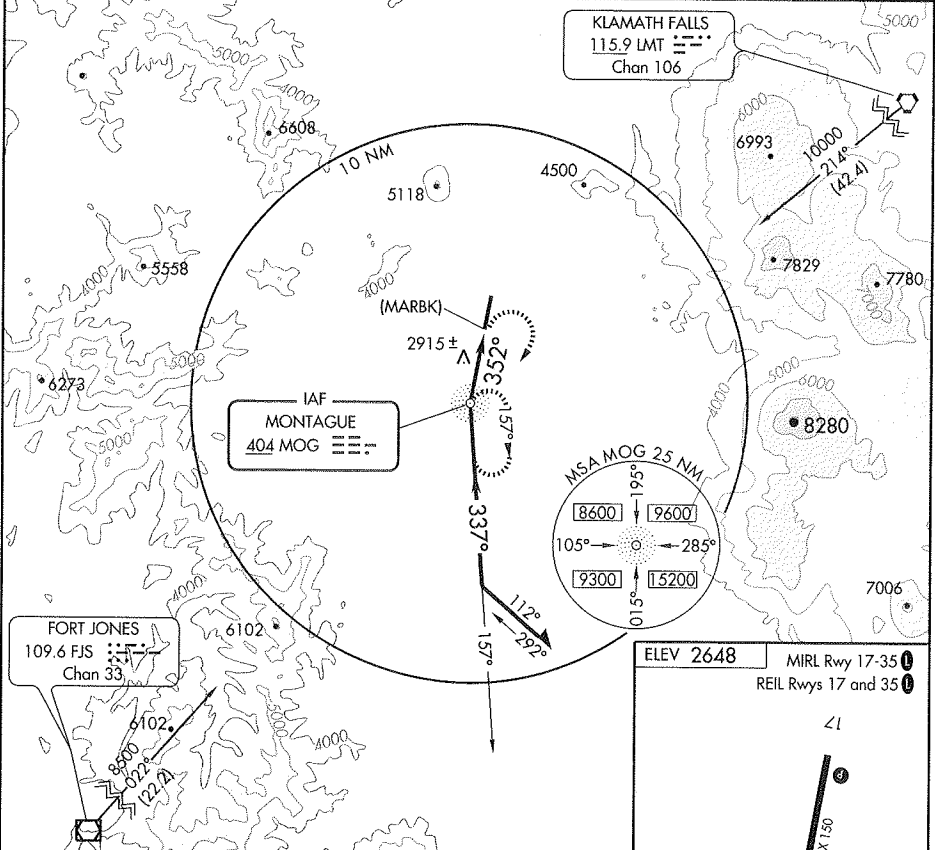
MONTAGUE/ SISKIYOU COUNTY (SIY)

NDB MOG	APP CRS	Rwy Idg TDZE	N/A
404	352°	Apt Elev	2648

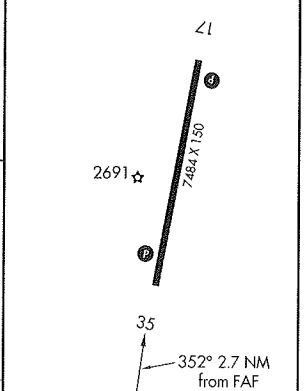
NA Use Siskiyou County altimeter setting; when not available, use Montague-Yreka Rohrer Field altimeter setting; when neither received, procedure not authorized.

MISSED APPROACH: Climbing right turn to 6800 direct MOG NDB and hold.

ASOS 121.125	SEATTLE CENTER 124.85 306.3	UNICOM 123.0 (CTAF) 0
-----------------	--------------------------------	---------------------------------



ELEV 2648	MIRL Rwy 17-35 0
	REIL Rwys 17 and 35 0



CATEGORY	A	B	C	D	FAF to MAP 2.7 NM					
CIRCLING	3760-1¼ 1112 (1200-1¼)	3760-1½ 1112 (1200-1½)	3760-3	1112 (1200-3)	Knots	60	90	120	150	180
					Min:Sec	2:42	1:48	1:21	1:05	0:54

SW-2, 17 DEC 2009 to 11 FEB 2010

SW-2, 17 DEC 2009 to 11 FEB 2010