

MONTEREY, CALIFORNIA


AL-271 (FAA)

LOC/DME I-MRY 110.7 Chan 44	APP CRS 098°	Rwy Idg 7616 TDZE 193 Apt Elev 257
--	------------------------	---

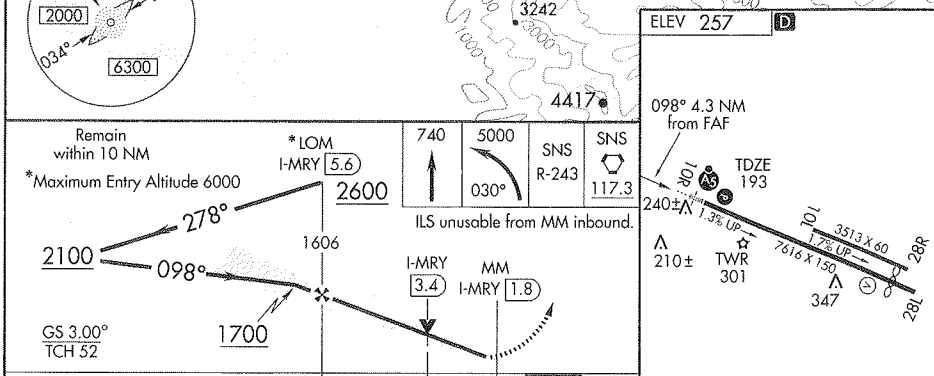
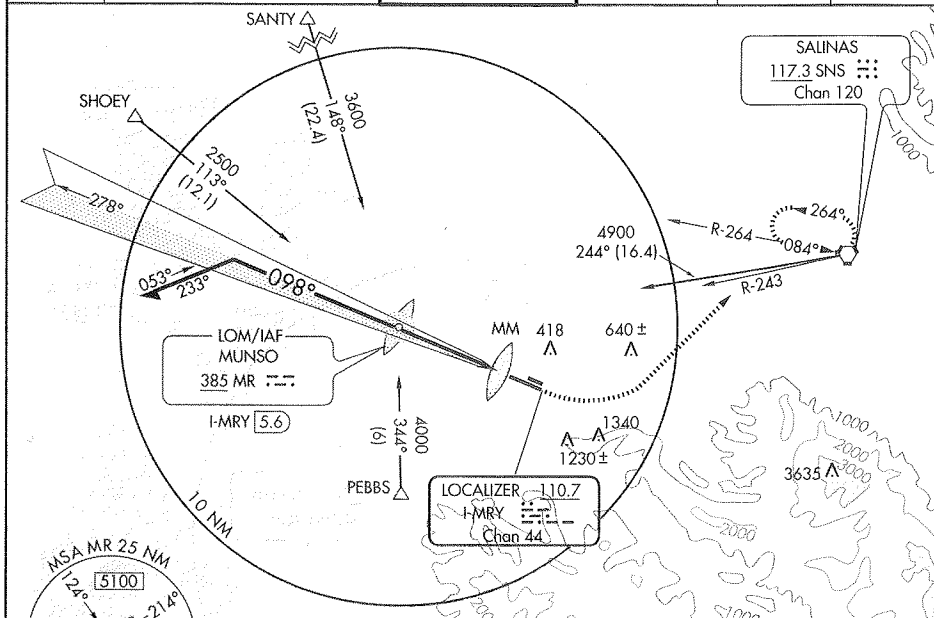
ILS or LOC RWY 10R

MONTEREY PENINSULA (MRY)

⚠ Circling not authorized south of Runway 10R-28L.
⚠ ILS unusable from MM inbound.
 Auto pilot coupled approach not authorized.
 For inoperative MAISLR, increase S-ILS 10R to RVR 5000.

MAISLR
 MISSED APPROACH: Climb to 740, then climbing left turn to 5000 via heading 030° and SNS R-243 to SNS VORTAC and hold.

ATIS 119.25	NORCAL APP CON 133.0 251.15 (360°-150°) 127.15 307.125 (151°-359°)	MONTEREY TOWER * 118.4 (CTAF) 0 257.8	GND CON 121.9 348.6	CLNC DEL 135.45	UNICOM 122.95
-----------------------	--	--	-------------------------------	---------------------------	-------------------------



CATEGORY	A	B	C	D
S-ILS 10R	480/24 287 (300-½)			
S-LOC 10R	900/24	707 (700-½)	900-1½ 707 (700-1½)	900-1¾ 707 (700-1¾)
CIRCLING	900-1	643 (700-1)	900-2 643 (700-2)	1080-2¾ 823 (900-2¾)

ELEV 257 **D**

098° 4.3 NM from FAF

240± TW 210± TWR 301

351.3 X 60
1.7% UP
7616 X 150
347

MIRL Rwy 10L-28R
 HIRL Rwy 10R-28L **Ⓢ**
 REIL Rwy 28L **Ⓢ**

FAF to MAP 3.8 NM

Knots	60	90	120	150	180
Min:Sec	3:48	2:32	1:54	1:31	1:16

MONTEREY, CALIFORNIA
 Amdt 27 09z

36°35'N-121°51'W

MONTEREY PENINSULA (MRY)
 ILS or LOC RWY 10R

SW-2, 17 DEC 2009 to 11 FEB 2010

SW-2, 17 DEC 2009 to 11 FEB 2010