

MONTEREY, CALIFORNIA

AL-271 (FAA)

APP CRS	Rwy Idg	3513
264°	TDZE	253
	Apt Elev	254

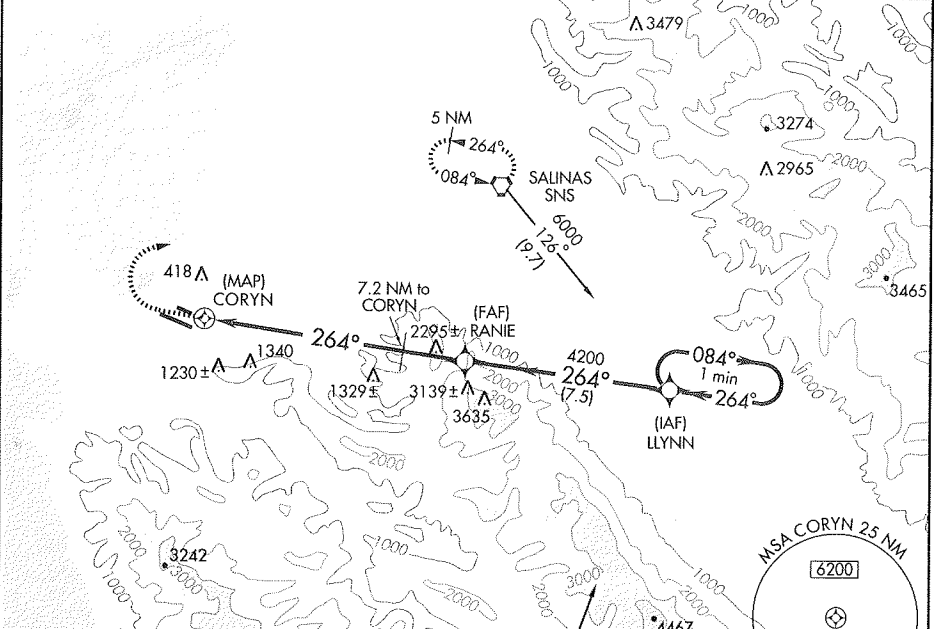
GPS RWY 28R

MONTEREY PENINSULA (MRY)

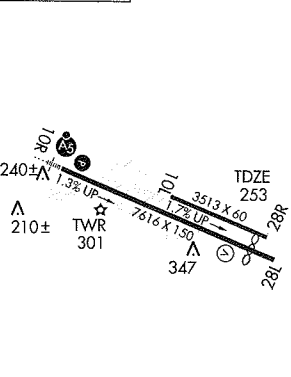
NA Circling not authorized south of Rwy 10R-28L.
 When tower closed, straight-in minimums not authorized.

MISSED APPROACH: Climb to 1900, then climbing right turn to 6000 direct SNS VORTAC and hold.

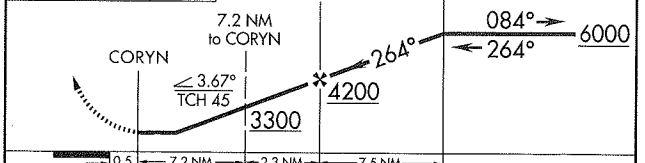
ATIS	NORCAL APP CON	MONTEREY TOWER *	GND CON	CINC DEL	UNICOM
119.25	133.0 251.15 (360°-150°) 127.15 307.125 (151°-359°)	118.4 (CTAF) 257.8	121.9 348.6	135.45	122.95



ELEV 254 **D**



1900	6000	SNS	One Minute Holding Pattern
↑	↪	⬡	



CATEGORY	A	B	C	D
S-28R	1560-1½ 1307 (1400-1½)	1560-1½ 1307 (1400-1½)		NA
CIRCLING	1560-1½ 1306 (1400-1½)	1560-1½ 1306 (1400-1½)		NA

MONTEREY, CALIFORNIA
 Orig-A 092

36°35'N-121°51'W

MONTEREY PENIN (MRY)
GPS RWY 28R

SW-2, 17 DEC 2009 to 11 FEB 2010

SW-2, 17 DEC 2009 to 11 FEB 2010